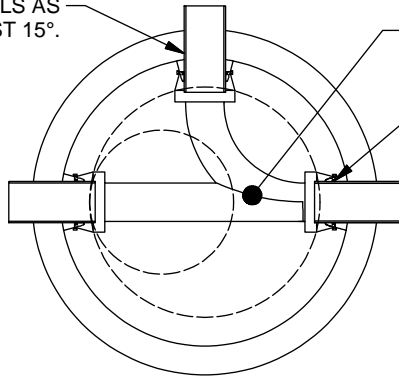


ADDITIONAL MATERIALS AS REQUIRED TO NEAREST 15°.

PRECAST CHANNEL AS REQUIRED.

A-LOK EXCELL OR Z-LOK GASKETS.



CONFORMS TO S-282-1  
A-1496  
"CITY OF LA SEWER"

30.00 x 27.00 x 3.00 REDUCER

12.00 MIN  
24.00 MAX

24.00, 27.00  
OR 36.00

T-LOCK LINED

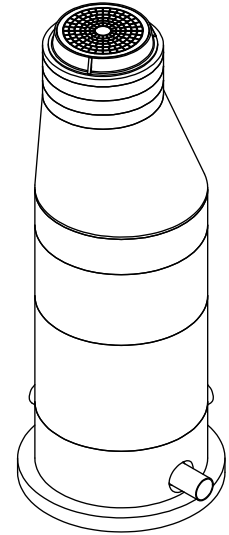
SHAFT VARIES  
12.00 - 60.00

30.00

6.00

9.00

6.00  $\varnothing 72.00$



ISOMETRIC VIEW

**NOTES:** UNLESS OTHERWISE SPECIFIED.

1. ALL DIMENSIONS ARE IN DECIMAL INCHES.
2. PRECAST MATERIALS AND MANUFACTURING METHODS SHALL CONFORM TO ASTM C-478 AND CITY OF LOS ANGELES A STANDARD S-142.
3. CONCRETE SHALL HAVE A MINIMUM COMPRESSIVE STRENGTH F C= 4000 PSI AT 28 DAYS AND CONFORMS TO APMA 600-C-4000.
4. THE PORTLAND CEMENT USED IN THE PRECAST SECTIONS SHALL MEET THE REQUIREMENTS OF TYPE II/V HIGH SULFATE RESISTANT CEMENT IN ACCORDANCE WITH ASTM C-150.
5. RING AND COVER SHALL BE GREY CAST IRON CONFORMING TO ASTM A-48 CLASS 35B.
6. RING AND COVER CONFORMS TO S-282-1.
7. PIPE TO MANHOLE CONNECTIONS SHALL BE MADE USING X-CEL, A-LOK OR Z-LOK FLEXIBLE CONNECTORS BY A-LOK PRODUCTS. CONNECTORS SHALL MEET THE REQUIREMENTS OF ASTM C-923 AND SSPWC 208-6.1.1.
8. INTERIOR OF PRE-CAST MANHOLE SHALL BE LINED WITH T-LOCK PVC LINER. ALL MATERIALS AND INSTALLATION SHALL BE IN ACCORDANCE WITH MANUFACTURER'S RECOMMENDATIONS.

CONTRACTOR TO FILL ANULAR SPACE AFTER PIPE INSTALLATION.



Phone (805) 527-0841 Fax (805) 584-0769

TITLE MANHOLE, 48 DIA, PRECAST BASE, 30 RING & COVER

APPROVED BY

DATE

APPROVED BY

DATE

DRAWN BY

DATE

MODEL NO.

SH 1 OF 1

F. ANSALDI

11/16/2005

MH4830B